

A nighttime photograph of a city skyline, likely New York City, with numerous skyscrapers illuminated by city lights. The image is in a dark, monochromatic blue tone.

DMR TAIT PORTFOLIO OVERVIEW & PRODUCT SELECTION GUIDE

KEEP BUSINESS MOVING *FORWARD*

TAIT DMR TIER 2

Digital communications solutions to help businesses thrive with safer, more agile and productive teams.





Digital Mobile Radio (DMR) is an open standard that enables multivendor compatibility to give you more freedom of choice and value for money throughout the life of your investment.

A WIDE RANGE OF OPTIONS TO MEET YOUR NEEDS

Tait DMR Tier 2 solutions offer a wide range of options that are adaptable and scalable to meet the diverse needs of many industries and different types of users.

From the simplest, most affordable products through to more advanced mission critical features, Tait is focussed on delivering value for money to help your business to thrive with safer, more productive teams.

BUSINESS RADIO SOLUTIONS

IDEAL FOR:

- Hospitality, Hotels & Retail
- Sports, Tourism, and Event Management
- Manufacturing, Logistics and Transportation
- Schools and Universities

Designed for small to medium sized operations, the Tait Business Radio series combines affordability with operational simplicity. With such reliable communication solutions, businesses are well-equipped to thrive and expand. Tait Business Radios are a solid investment to help your teams stay connected, safe, and productive.



TP2 Portables, TP3 Portables, TB2 Repeaters, TM2 Mobiles



MISSION-CRITICAL SOLUTIONS

TAIT TOUGH

IDEAL FOR:

- Small and Medium Utilities
- Mining, Oil & Gas
- Large business operations
- Large transportation systems

The Tait Tough mission critical radio series is designed to provide reliable communications for teams operating in the most demanding conditions. These devices are engineered to be extremely robust and built to last. This series has highly flexible software options that can be customized to suit your operation as it stands today and can be changed or upgraded to suit your future needs.

This equipment can be deployed for basic communications or with advanced features such as Tait GeoFencing Automated Workflows, Over The Air Programming and is upgradeable to DMR Tier 3 Trunking to add more capacity to your system.

This combination of software upgradeable equipment that is built to last delivers excellent value for money through the life of your investment.



TP9000 Portables, TM9000 Mobiles, TB7300 and TB9400 Base Stations

TAIT DMR TIER 2 PORTABLES RANGE



TP2



The Tait TP2 is a lightweight and easy to operate two-way radio that can help your business grow.

Start teams talking quickly and affordably using direct radio-to-radio communications without the cost of additional networking equipment. Add one or more repeaters to provide coverage over a larger area when needed.

Choose a standard TP2 portable, or a TP2 with Man Down enabled for additional safety.



TP3



The Tait TP3 series offers a highly flexible, unique design and excellent value for money. This ergonomic radio gives you the power and flexibility to choose the color, display, keypad, and labels for each radio in your fleet.

The standard TP3300 is affordable, lightweight and easy to use.

The TP3350 is in a class of its own with Bluetooth®, Location Services and Man Down capability.



TP9000



**TAIT
TOUGH**
MISSION-CRITICAL RANGE

Their robust construction, superior functionality and exceptional audio quality make the TP9000 series the go-to radios for challenging work environments.

Compared to TP2 and TP3, TP9000 offers louder, clearer audio to hear and be heard in high noise situations.

Standard TP9000 features include Bluetooth, Location Services, Loneworker and Man Down operation are standard features, with optional Tait GeoFencing Automated Workflows. WiFi OTAP is available for some models.

Intrinsically Safe options are available for use in hazardous locations with explosive gasses.

The TP9700 is the world's first professional DMR multiband radio able to operate in VHF, UHF, 7/800MHz and 900MHz.

TAIT DMR TIER 2

PORTABLES SELECTION GUIDE



FEATURE	BUSINESS RADIOS			TAIT TOUGH 9000 SERIES		
	TP2210	TP3300	TP3350	TP9300	TP9500	TP9700
GENERAL						
Simple UI (No keypad, No display)	●	●	●	●		
Limited UI (Display, with controls)		●	●	●	●	●
Full UI (Display and Keypad)		Color	Color	Mono	Color	Color
Weight (Battery + Antenna)	280g	327g	327g	325g	333g	382g
Speaker Output	1W	1W	1W	2W	3W	3W
Color options		Yes	Yes	Yes	Yes	Yes
Mandown	▲		●	●	●	●
Location services			●	●	●	●
Bluetooth®			●	●	●	●
Audio Connector	2-pin	TP3000 and TP9000 share the same Tait Connector				
Battery & Charger	TP2210	TP3000		TP9000 models share the same batteries and chargers (excluding IS)		
FREQUENCY BANDS						
136-174MHz	5W	5W	5W	5W	5W	5W ^{3,4}
174-225MHz				5W		
350-400MHz	4W					
378-470MHz				4W	4W	4W ^{3,4}
400-470MHz	4W			4W	4W	4W ^{3,4}
400-480MHz		4W	4W			
450-520MHz	4W	4W	4W	4W	4W	4W ³
7/800MHz				3W	3W	3W ³
900MHz						3W ³
CHANNELS						
Channels	256	2000	2000 ¹	4000 ²	4000	4000
ENVIRONMENTAL						
Dust/Water Ingress Protection	IP54	IP67	IP67	IP68/65	IP68/65	IP68/65
MIL-Std-G		●	●	●	●	●
ADVANCED FEATURES IN ANY MODE (ANALOG, DMR TIER 2 OR DMR TIER 3)						
Tait GeoFencing				▲	▲	▲
WiFi OTAP ⁷					●	●
Active Noise Cancellation					●	●
Multiband						▲
Intrinsically Safe Option				▲ ⁵	Pending ⁶	
DMR TIER 3 TRUNKING FEATURES						
DMR Tier 3 Trunking				▲	▲	▲
OTAP via DMR Tier 3 Network ⁷				●	●	●
Fast Polling (USB) 2000 polls/minute				▲	▲	▲

● Standard feature

▲ Optional feature

1 32 channels 0-key radio, 2000 channels 4-key and 16-key radios

2 48 channels TP9310, 4000 channels TP9355 and TP9360

3 Radio can be configured to operate on any combination of the supported bands

4 for US VHF can be 6W and UHF can be 5W

5 IECEx IIA and IIC available internationally, Division 1 available in USA and Canada

6 Division 1 for USA and Canada

7 Requires Tait EnableFleet



TM2

The TM2 is a cost effective entry level 25W mobile radio that combines affordability with operational simplicity and Loneworker capability to keep your mobile working teams safe and productive.



**Not available in USA or Canada.*

TM9000

The TM9000 mobiles have an extensive range of user interface and installation options, from basic display, through to color display screens, color housing options, keypad options, hand held control head and remote mount kits for easier installation.

Loneworker operation is standard. A wide range of hardware and software options are available, including Location Services, Tait GeoFencing Automated Workflows, WiFi OTAP and Bluetooth.

In addition to 25W models, high power output models are also available where regulatory bodies allow them.



TCH3



TCH4



TCH6



Large Control Head (LCH)



Hand Held Control Head (HHCH)

TAIT
TOUGH
MISSION-CRITICAL RANGE

FEATURE	BUSINESS TM2210 ¹	TAIT TOUGH 9000 SERIES				
		TM9315	TM9355	TM9356	TM9395	TM9700 ²
ENHANCED CONNECTIVITY						
Dual Band (Dual Torso)				▲		
Multiband (Single Torso)						▲
WiFi OTAP capability ^{3, 4}			▲			
Bluetooth® ³			▲			
Broadband (WiFi and Cellular) voice and data ³			▲			
FREQUENCY BANDS						
136-174MHz	25W	25W / 50W	25W / 50W	25W / 50W	25W / 50W	25W
174-225MHz		25W	25W	25W	25W	
378-470MHz ^{5,6}		40W	40W	40W	40W	25W
400-470MHz ⁶	25W					
450-520MHz ⁶		25W / 40W	25W / 40W	25W / 40W	25W / 40W	25W
757-870MHz ⁷		35W	35W	35W	35W	
CHANNEL CAPACITY						
Number of Channels	256	100	4000	4000	4000	4000
USER INTERFACE						
Color Display Screen	●		▲	▲		▲
Hand Held Control Head			▲	▲		▲
2 Digital Display		●				
Menu Navigation Keys	●		●	●		●
Full Keypad (Keypad Mic, HHCH, TCH6)			▲	▲		▲
Remote Control Head Options			●	●		●
Dual Control Head			▲TM9357			▲
Control Head Options (LCH, HHCH)			▲	▲		▲
EXCEPTIONAL AUDIO						
Vocoder and Digital Noise Suppression	●	●	●	●	●	●
Internal Speaker Output	3W	3W ⁸	3W / 4W ⁸	3W / 4W ⁸		3W / 4W ⁸
External Speaker Output	7W	10W ⁹ / 15W	10W ⁹ / 15W	10W ⁹ / 15W	10W ⁹ / 15W	10W ⁹ / 15W
SAFETY FEATURES						
Lone Worker	●	●	●	●	●	●
Location Services ¹⁰	▲	▲	▲	▲	▲	▲
Tait GeoFencing Automation ¹⁰		▲	▲	▲	▲	▲
DMR TIER 3 TRUNKING FEATURES						
DMR Tier 3 trunking		▲	▲	▲	▲	▲
OTAP via DMR Tier 3 networks ⁴		●	●	●	●	●
Industry Leading Fast Polling (USBD) 2000 polls/minute ¹⁰		▲	▲	▲	▲	▲

- Standard feature
- ▲ Optional feature

- 1 TM2 not available in USA or Canada
- 2 Only for Australia and New Zealand
- 3 Requires Tait Unified Vehicle / TMX450
- 4 OTAP requires Tait EnableFleet
- 5 HK 378-470MHz hardware supersedes the H5 400-470MHz hardware previously available
- 6 The UHF band radios are approved for use in Citizen Band (CB) in Australia and New Zealand when programmed to meet the requirements of AS/NZS4365. Tait cannot guarantee full

- performance to the published specifications when the HK or H5 radios are operating at the CB frequencies.
- 7 FCC and IC approved (ETSI approval not available)
- 8 Internal speaker available for TM9300 and TM9700 fitted with TCH3 (4W), TCH4 (4W), or LCH (3W). Not available with TCH6 or HHCH
- 9 Standard for HHCH and TCH6 packages. Optional for LCH, TCH3, TCH4, TM9315 and TM9395
- 10 Requires GNSS Receiver to be fitted

TB2

The TB2 is designed for use with TP2, TM2, and TP3 radios, affordably enhancing the safety and productivity of your teams over a wider area of operations. This compact and cost-effective solution expands your coverage with support for analog and digital communications.



TB7300 & TB9400

The Tait TB9400 and TB7300 base stations and repeaters are renowned for their robust performance and reliability in mission-critical operations.

Industry leading RF performance delivers better coverage, especially where radio site spectrum is congested with other users.

Both the TB7300 and TB9400 can be used in Simulcast networks to provide wide area all informed coverage with a maximum spectrum efficiency.

The TB9400 is particularly noted for its flexibility, while the TB7300 is praised for its compact design and cost-effectiveness, making them indispensable assets in modern communication networks.

TB7300 BASE STATION



TB9400 BASE STATION



TAIT DMR TIER 2

BASE STATION SELECTION GUIDE



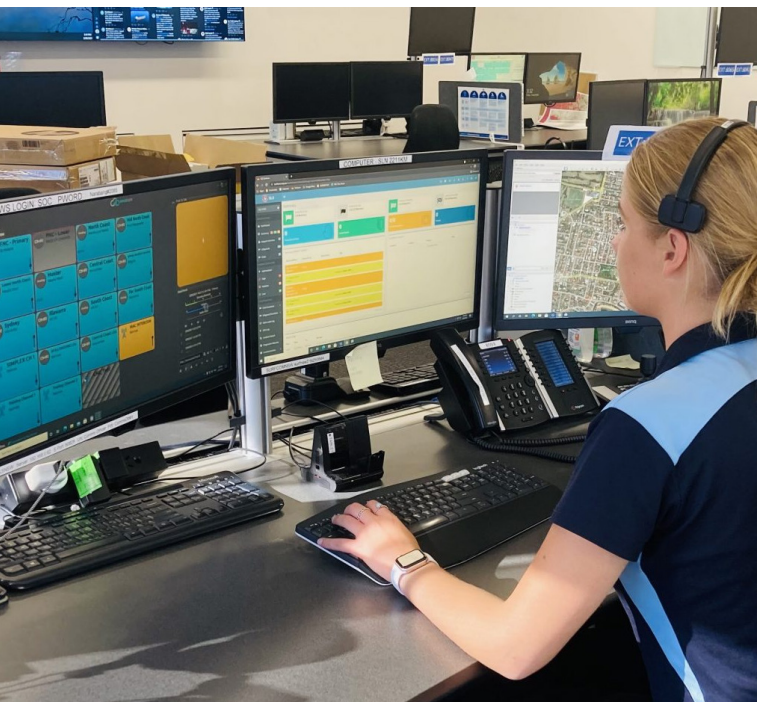
FEATURE	BUSINESS TB2210	TAIT TOUGH 9000 SERIES TB7300TB9400	
FREQUENCY BANDS			
136-174MHz	45W	50W	50W / 100W
378-420MHz			50W / 100W
400-440MHz			50W / 100W
400-470MHz	40W	40W	
440-480MHz			50W / 100W
470-520MHz		40W	50W / 100W
762-870MHz		35W	50W / 100W
POWER CONSUMPTION			
Standby Current Drain & Power Supply Options	<1.0A	0.83A, 11.5W @ 13.8V DC 0.2A, 20W @ 120/230 VAC	Single: 0.37A, 30W @ 120VAC
Single: 50W/100W Dual: 2x 50W transmitter			Dual: 0.49A, 50W @ 120VAC
			Single: 0.51A, 31W @ 230VAC
			Dual: 0.51A, 45W @ 230VAC
			Single: 2.0A, 24W @ 12VDC³
			Dual: 3.3A, 39W @ 12VDC³
RADIO FREQUENCY PERFORMANCE			
Analog Sensitivity (12dB SINAD)	0.3µV	≤119dBm 0.25µV	≤119dBm 0.25µV
DMR Sensitivity	0.3µV @ 5% BER	≤120dBm @ 5% BER	≤120dBm @ 5% BER
Selectivity (12.5kHz)	70dB@12.5kHz 75dB@20/25kHz	≥82dB (VHF) ≥79dB (UHF)	≥82dB @ 1% BER (VHF/UHF)
GENERAL PARAMETERS			
AIS Interface	●	●	●
Audio Interface	●	●¹	●¹
4W E&M		▲¹	▲¹
Duty Cycle	100%	100%	100%
Size	1U	1U	4U (2 x 50W channels in 4U)
Channels	64	4000	4000
Conventional IP Network	Option	Option	Option
UI	9 LEDS	4 LEDS	4 LEDS, 4-row Display, 7 keys
Other Interfaces	TCP/IP & Rear Port Connection	TCP/IP (RJ45), System Interface (DB-25), ext. frequency ref. input	TCP/IP (RJ45), System Interface (DB-25), ext. frequency ref. input
HTTPS Secure Remote Access		●	●
SNMP		●	●
In-built Diagnostics Alarm Monitoring	●	●	●
In-built Spectrum Analyzer		●	●
Task Builder		●	●
Multimode DMR or P25		●	●
RX Only Base Station			●²
Simulcast Support		●	●
Built-In Voter		▲	▲
DMR Tier 3 / MPT1327 Capability		▲	▲

● Standard feature ▲ Optional feature

1 In analogue mode only

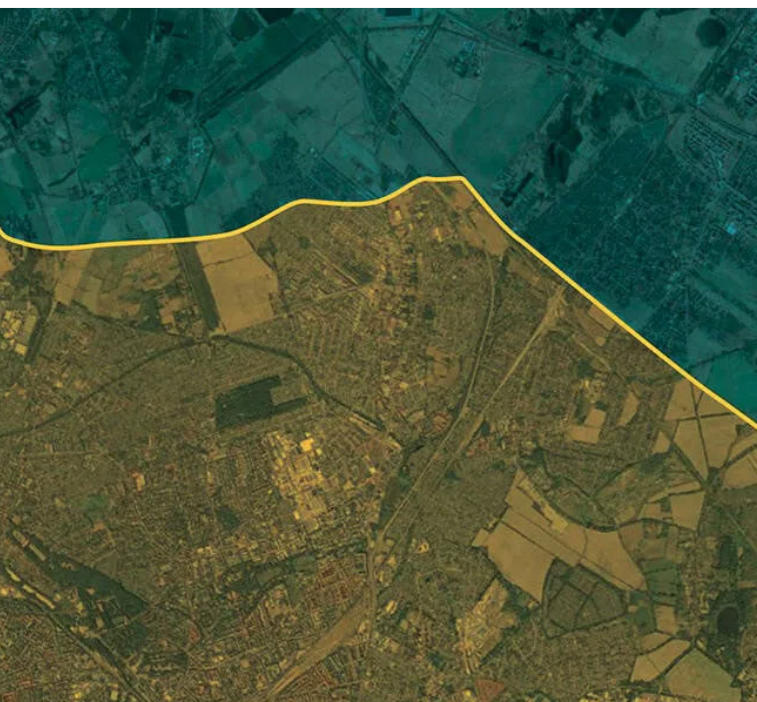
2 Up to four receivers

3 24VDC and 48VDC options available



DISPATCHERS

Provide real-time communication and coordination, which is crucial in various industries such as transportation, emergency services, and event management. They offer an immediate and reliable means of dispatching information and instructions, which can be vital in time-sensitive situations. Moreover, radio dispatchers enhance operational efficiency by managing the flow of information, ensuring that resources are utilized effectively, and reducing response times. Their role also includes maintaining clear communication channels, which is essential for safety and coordination during critical operations. Dispatchers can integrate modern systems that offer improved functionality, such as [GPS tracking](#) and [data analytics](#), further enhancing their value to businesses and organizations. Dispatchers are an indispensable asset in any communication-dependent organization.



GEOFENCING

Technology offers a significant value for DMR Tier 2 networks, particularly in mission-critical communication scenarios. By [establishing virtual boundaries](#), geofencing enhances operational efficiency and personnel safety. For instance, in emergency services, [geofencing can automatically adjust a radio's settings](#), such as changing talkgroups or alerting the user upon entering or exiting a designated area, facilitating hands-free operation and ensuring all responders are on the correct channel for effective communication. This autonomous operation not only improves response times but also reduces the need for manual intervention. The integration of geofencing into digital two-way radio networks represents a forward step in [leveraging location-based services to deliver smarter, more responsive communication solutions](#) that meet the demands of modern public safety and service industries.



INTRINSICALLY SAFE

DMR radios offer mobile communication for industries [operating in hazardous environments](#). These devices are engineered to ensure safety and reliability where the presence of flammable gases could pose a risk of explosion. With compliance to global safety standards, intrinsically safe radios are [designed to prevent ignition of surrounding atmospheres](#). They provide clear, reliable communication across various modes, including DMR Tier 2 and other digital and analogue solutions, ensuring interoperability and flexibility for users. Additionally, features like emergency keys, integrated GPS, and man-down alerts enhance worker safety by enabling quick response in crisis situations. The combination of rugged design, adherence to MIL-STD-810G and IP67 standards, and the ability to withstand extreme conditions, makes these radios an indispensable tool for improving operational efficiency and ensuring workforce safety in challenging industrial settings.



SIMULCAST

DMR solutions offer a range of benefits for mobile communications. [They enable the broadcasting of the same signal over multiple transmitters on the same frequency](#), which is particularly advantageous in terms of spectrum efficiency and ease of use. This technology allows for [wide-area coverage with consistent communication quality](#), without the need for manual intervention as users move through different cells. Additionally, the digital nature of Tait DMR simulcast systems ensures improved reliability and clearer audio quality compared to analog systems. With the implementation of advanced algorithms, issues such as signal degradation in overlap areas are mitigated, ensuring seamless communication across the network. Moreover, the IP backbone of digital simulcast infrastructure supports enhanced features like remote management and low cost of ownership, making it an efficient operation for organizations with multiple sites or mobile workforces.



Tait has taken every care in compiling this brochure, but we're always innovating and therefore changes to our models, designs, technical specifications, visuals and other information included in this brochure could occur. For the most up-to-date information and for a copy of our terms and conditions please visit our website www.taitcommunications.com

The words "Tait", "TAIT AXIOM", and the "Tait" logo are trademarks of Tait International Limited.

Copyright © 2024 Tait International Limited Tait_B_DMR Tier 2_v1.2 2024-08

www.taitcommunications.com

tait
communications