

STAY CONNECTED. *EVERY TIME.*

TAIT RAPID DEPLOYABLE
SOLUTIONS



DMR

TAIT
TOUGH




**TAIT TOUGH.
COMPACT.
RAPID & EASY TO DEPLOY.**

taït
communications

A photograph of two firefighters in a forest at night. The firefighter in the foreground is wearing a white helmet and a dark jacket with reflective stripes, looking away from the camera. Another firefighter is visible in the background, also in full gear. The scene is illuminated by warm, orange light, possibly from a fire or emergency lights, creating a dramatic and urgent atmosphere.

KEEPING YOU SAFE AND ON-MISSION

Unleash your team's potential with fit-for-purpose, critical communications solutions from Tait Communications.



For more than 50 years, Tait Communications has been designing, delivering and supporting critical communications networks for public safety, transportation, mining, oil, and gas, and utilities customers around the world.

Tait Communications helps you stay safe and on mission when the heat is on. From comprehensive radio networks with advanced data capabilities, to support and managed services, you can trust Tait. Built with Kiwi ingenuity in Christchurch, New Zealand, we put your safety at the top of our agenda day in, day out.

We believe we can make the world a safer, better and more efficient place through our commitment to open standards, interoperability and better safety outcomes.

Tait solutions are customizable, versatile, flexible and built for every challenge. We uphold the principle of our founder, Sir Angus Tait:

**“ IF IT CAN SAVE
A LIFE, MAKE IT
TOUGH ENOUGH
TO SURVIVE
ANYTHING.”**



TAIT RAPID DEPLOYABLE SOLUTIONS

Stay Connected Wherever You Are.
Every Time.

From large-scale emergencies to remote utility operations, communication is critical when teams are working in challenging or unpredictable environments. Tait Deployable Solutions deliver rapid, reliable connectivity wherever it's needed—supporting public safety, utilities, and multi-agency response.

Compact, rugged, and easy to deploy, these solutions range from portable repeaters and connected vehicles to flexible outdoor sites. Whether extending coverage, creating a temporary network, or restoring communication after an outage, Tait keeps your teams connected, coordinated, and ready for anything.

CUSTOM SOLUTION

Many Tait Rapid Deployable Solutions are examples of Tait customization capability and client specific development. Tait can build this solution for you, or can design customized deployable solutions to meet your needs. Contact your Tait representative for information about compliance, pricing and availability for your country.

RAPID DEPLOYABLE SOLUTIONS



TA3633 LIGHTWEIGHT TRANSPORTABLE REPEATER

CUSTOM SOLUTION

The TA3633 is a lightweight, transportable conventional repeater supporting analog operation, with additional DMR Tier 2 and P25 repeater capability. Designed for rapid deployment, it operates from 10–30 V DC and includes an internal battery with integrated charging for flexible field use.



TB7300 TRANSPORTABLE REPEATER

The TB7300 base station is a multi-mode platform supporting analog conventional, DMR, and P25 Phase 1 operation. Designed for rapid deployment, it operates from 11–15 V DC and includes an internal battery with integrated charging, and an optional battery pack available for extended operation.



TA3004 TRANSPORTABLE MULTI-CHARGER

CUSTOM SOLUTION

TA3004 Transportable Multi-Charger gives emergency responders fast, reliable charging anywhere. Its rugged Pelican™ case supports up to six TP9000 radios and Slimline 1880 mAh or High Capacity 3300 mAh Li-ion batteries at once. Powered by 110–240 V AC mains, a vehicle accessory socket, or any 10–30 V DC source, it delivers flexible, dependable operation.



TAIT FLEXISITE

CUSTOM SOLUTION

Fully self-contained Tait DMR Tier 3 radio sites are available for easy, rapid deployment to place the coverage where you need it. These compact radio sites are housed in American-made, NEMA-rated enclosures that can be pole-mounted or deployed outdoors, built Tait Tough for long-term durability in harsh environments.



TAIT CONNECTED VEHICLE

CUSTOM SOLUTION

Tait's in-vehicle solutions bring broadband devices, mobile radios, and body-worn cameras together into one integrated platform. Designed for demanding front-line environments, these solutions deliver reliable connectivity, real-time video, and clear voice communications—right from the vehicle. With seamless interoperability and rugged, purpose-built hardware, responders can coordinate faster, capture critical evidence, and maintain situational awareness wherever the mission takes them.

TA3633 LIGHTWEIGHT TRANSPORTABLE REPEATER

From natural disasters to crime scenes, firegrounds, and tactical operations, the Tait TA3633 transportable repeater gives you rapid, reliable communications wherever safety and security are on the line. Deploy it in minutes to extend your coverage or create a dedicated on-scene network.

The TA3633 operates as a powerful Analog conventional repeater and offers digital flexibility with DMR Tier 2 and P25 capabilities.





A range of portable antenna mast kits available in Soft PVC Carry Case (1.) or Hard PVC Tube kits (2.)



For extended operation, a dual battery case can be connected to a solar panel

DELIVERING ON OPERATIONAL NEEDS

The TA3633 Transposable Repeater enables rapid field deployment as a single conventional RF channel, delivering dependable coverage and network extension in challenging environments. Its streamlined operator interface allows channel selection and management through a single control point, simplifying setup and operation.

DMR AND P25 CONVENTIONAL

In addition to analog conventional mode, the TA3633 also supports DMR Tier 2 and P25 repeater functionality in digital mode, providing flexible interoperability across communication standards.

The TA3633 delivers ultra-narrowband 6.25 kHz equivalent channel efficiency in DMR Tier 2 mode, utilizing 1-slot TDMA to support both voice and data services.

OPTIONS AND ACCESSORIES

The portable antenna mast kits come in a convenient soft carry case with rugged PVC protection, making transport and setup simple in any environment. For extended missions, the dual battery case can be paired with a solar panel, ensuring continuous, reliable power for longer deployments without interruption.

TRANSPORTABLE

Designed in a rugged, waterproof Pelican™ case, the TA3633 is a compact base station that is easy to transport and deploy. It offers selectable output power from 1 W up to 4 W or 5 W, depending on the frequency band.

EXTENDED LIFE

The default power configuration supports 10–30 V DC and includes an internal battery with built-in charging capability, while an optional external battery pack can be added for extended operation. For greater convenience, a duplexer is fully integrated into the Pelican™ case, minimizing setup time and equipment needs.



RAPID DEPLOYABLE SOLUTIONS

TA3633 KEY FEATURES

CUSTOM SOLUTION

- › Supports Analog repeat
- › DMR Tier 2 single slot or P25 Conventional operations
- › Simple change of channel through the radio interface
- › Ultra-narrowband 6.25 kHz equivalent technology for DMR
- › DMR Tier 2 mode (1 x TDMA channel slot in one 12.5 kHz channel)
- › Easy and rapid deployment of single repeater operation
- › 12.5 kHz Analog repeater operation
- › Designed inside a rugged waterproof Pelican™ case
- › 10-30 V DC power supply input, supplied with AC/DC power supply
- › Internal SLA battery for rapid field deployment
- › Options and accessories for better operational efficiency
- › Range of portable antenna mast kits (Soft PVC carry case or hard PVC Tube kits) Extended life battery case (Dual Batteries)



TB7300 TRANSPORTABLE REPEATER

From natural disasters to crime scenes, firegrounds, and tactical operations, the Tait TB7300 Transportable Repeater gives you rapid, reliable communications wherever safety and security are on the line. Deploy it in minutes to extend your coverage or create a dedicated on-scene network.

The Tait TB7300 is a versatile multi-mode platform that supports Analog conventional, DMR and P25 Phase 1. In DMR mode, it delivers 6.25 kHz equivalent channel efficiency, ensuring excellent spectrum utilization while remaining fully compliant with DMR Tier 2 and DMR Tier 3 standards.



RAPID DEPLOYABLE SOLUTIONS

TB7300 OVERVIEW

EASY, RAPID DEPLOYMENT

The TB7300 is designed for easy, rapid deployment, operating as a single conventional RF channel or as a trunked site with both control and traffic channels. For greater capacity, additional transportable units can be connected. It can also function as a trunked or linked conventional base station, enabling quick expansion of a private network.

MAXIMUM CONNECTIVITY

Flexible IP connectivity allows seamless linking, with the ability to transfer both voice and data across a packet-switched infrastructure using standard IP protocols. With built-in P25/DMR VoIP support, Quality of Service (QoS) assignments ensure optimal routing of voice and signaling traffic. Remote software downloads can be performed with no disruption to operations, keeping your system secure and up to date.

PROVEN INTEROPERABILITY

Designed and tested to DMR Tier 2 Conventional, Tier 3 Trunking, and P25 open standards, ensuring full interoperability and giving customers the freedom to choose their preferred vendors and equipment. The TB7300 delivers ultra-narrowband 6.25 kHz equivalent channel efficiency in DMR Tier 2 mode, utilizing 1-slot TDMA to support both voice and data services

OPTIONS AND ACCESSORIES

- › Schurter waterproof AC Mains socket to make up an external AC Mains cable Supplied with the unit (must be wired by a registered electrician)
- › External DC Input Cable with Red and Black clamps (clips)
- › Removable 12 V SLA battery (fitted inside)

TRANSPORTABLE

Designed in a rugged, waterproof Pelican™ case, the TB7300 is a compact base station that is easy to transport and deploy. It offers selectable output power from 2 W to the maximum transit power 25 W/30 W, depending on the frequency band.

EXTENDED BATTERY LIFE

The default power configuration supports 11-15 V DC and includes an internal battery with built-in charging capability, while an optional external battery pack can be added for extended operation. For greater convenience, a duplexer is fully integrated into the Pelican™ case, minimizing setup time and equipment needs.

INTEGRATED SOLUTION

The TB7300 seamlessly integrates with the TB9300 (DMR only) and TB9400 base stations, supporting analog, DMR, and P25 Phase 1. It's also a key part of the Tait DMR Express and Access solutions, working with the TN9300 Node Controller to power efficient DMR trunking networks.

SMART, SECURE REMOTE MANAGEMENT

Take control of your network from anywhere with built-in HTTPS web server and SNMP v3 support. Monitor and report critical base station or repeater alarms in real time and use inbuilt diagnostics to quickly confirm performance or identify faults remotely. Enhanced security features—including password protection, access levels, and multiple user accounts—ensure safe operation. System logs provide a full audit trail, while support for up to 4,000 channels allows a single configuration to be deployed seamlessly across multiple sites.



RAPID DEPLOYABLE SOLUTIONS

TB7300 KEY FEATURES

- › Multi-mode platform supporting Analog Conventional, DMR Conventional and Trunking (TDMA) and P25 Conventional and Trunking (Phase 1 FDMA)
- › Simple change of mode through the web interface
- › Ultra-narrowband 6.25 kHz equivalent technology for DMR modes (2 x TDMA channels in one 12.5 kHz channel)
- › Adherence to the DMR and P25 standards
- › Easy and rapid deployment of single repeater operation
- › DMR fallback into single site operation
- › 12.5 kHz analog repeater operation offers single site repeat
- › Efficient system infrastructure scalability based on IP network connectivity
- › Extensive range of remote management and monitoring capabilities with a security focus
- › Built-in spectrum analyzer provides on-site diagnostics
- › Designed inside a rugged waterproof Pelican™ case
- › AC/DC power supply inputs
- › Internal SLA battery for rapid field deployment
- › Options and accessories for better operational efficiency



TA3004 TRANSPORTABLE MULTI-CHARGER

Rapid, field-deployable communications are essential for emergency responders. Scalable communications equipment such as the Transportable Multi-charger extends the operational footprint and enhances deployment flexibility.

The TA3004 Transportable Multi-charger supports multiple power options, including 110–240 VAC mains, a vehicle accessory socket, or a stand-alone 10–30 V DC power source, providing exceptional versatility in the field.

Housed in a rugged Pelican™ case, the Transportable Multi-charger can operate with the lid open to simultaneously charge a mix of portable radios and batteries. It supports both Slimline 1880 mAh lithium-ion (Li-ion) and High Capacity 3300 mAh Li-ion batteries, enabling flexible power management during operations.



RAPID DEPLOYABLE SOLUTIONS

TA3004 OVERVIEW

CUSTOM SOLUTION

EASY, RAPID DEPLOYMENT

The TA3004 transportable multi-charger provides rapid field-deployable communication to emergency responders. The Transportable Multi-charger extends your normal field of operation and enhances flexibility.

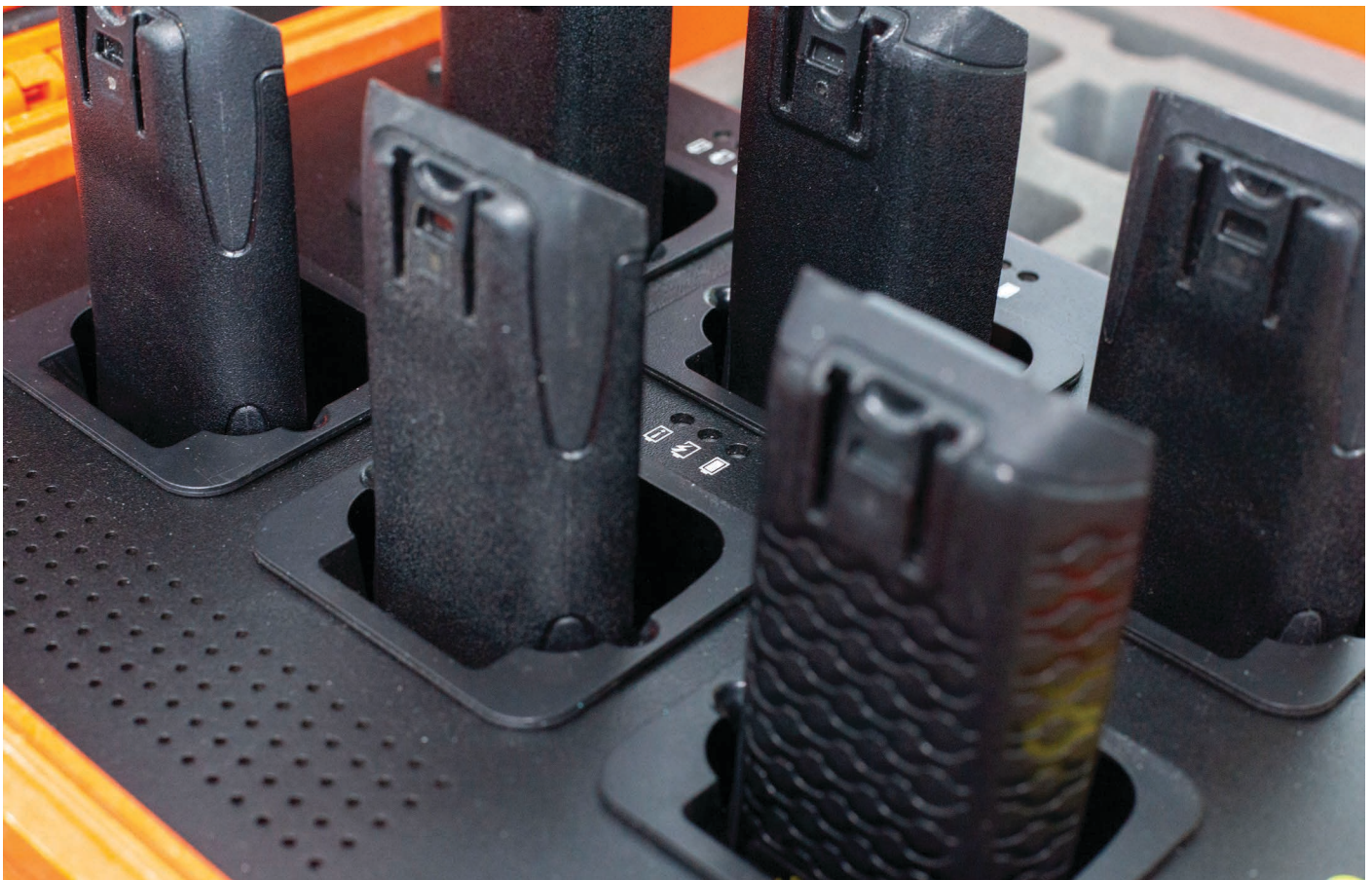
TRANSPORTABLE

The Transportable Multi-charger's rugged Pelican™ case with its lid up can charge a combination of up to six TP9000 portable radios¹ and batteries at a time, both Slimline 1880 mAh Lithium Ion (Li-ion) or High Capacity 3300 mAh Li-ion batteries can be used.²

DEPENDABLE, FLEXIBLE POWER

The TA3004 Transportable Multi-Charger delivers true versatility, operating from 110–240 VAC mains, a vehicle accessories socket, or any 10–30 V DC power source. The TA3004 adapts to your mission with rugged connectors and country-specific cord options.

1. Not for use with Intrinsically Safe or Non-Incendive radios.
2. Charging can only be carried out with the lid open.
The unit is not waterproof with the lid open.



Complete, compact radio sites for outdoor deployment.

Extend radio communications into or around buildings and hard-to-reach coverage areas.

FLEXIBLE

Disaster Recovery-Ready

- › Pre-configured and in-stock for immediate restoration response when existing sites go offline.

Safe, Secure Transport

- › Integrated lifting hooks ensure safe handling and rapid logistics in emergencies.

Validate Before You Commit

- › Ideal for short-term deployments to assess coverage before investing in permanent infrastructure.

COST-EFFECTIVE

Reuse What Works

- › Built on the same architecture and platforms as your wide area DMR system—no costly customization, minimal integration overhead.

Standardized Approach

- › Aligns with existing project strategies and deployment methods used in WAN rollouts, making implementation faster and more predictable.

No Retraining Required

- › Operates using familiar hardware, software, and procedures—ideal for teams already trained on Victron and WAN systems.

RELIABLE.

Engineered for Standalone Reliability

- › Operates independently to ensure critical communications are maintained without network dependency.

Built-In Power Resilience

- › Integrated battery backup supports uninterrupted operation during power outages—keeping teams connected through the crucial first 24 hours of any incident.

IP-Connected Operation

- › Supports integration into trunked or conventional networks using standard IP backhaul over fiber, LTE, microwave, or satellite.

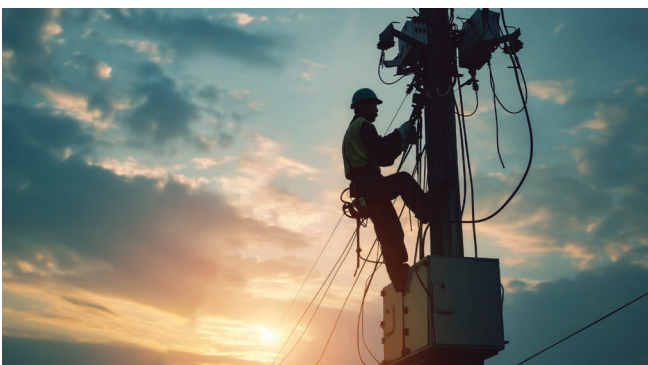
SECURE

Lockable, Tamper-Resistant Cabinet

- › The TB7300 and power equipment are housed in a secure, outdoor-rated enclosure with reinforced locking mechanisms.

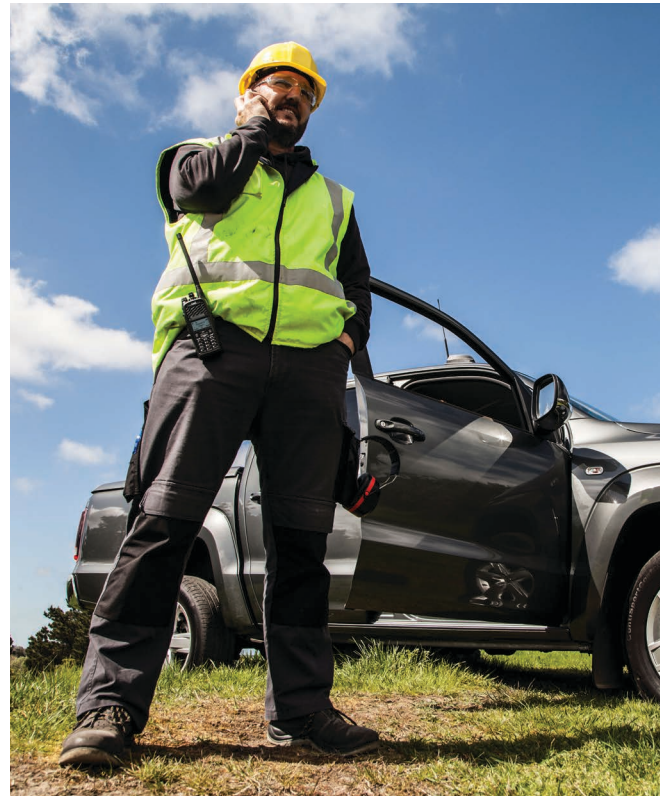
Pole Elevation Deters Access

- › Mounted components (e.g., antennas, cabling) are elevated above reach to prevent vandalism or theft.



Today's responders operate in fast-moving, harsh environments where clear communication and real-time awareness are essential. Our integrated in-vehicle solutions bring broadband devices, mobile radios, and body-worn cameras together to create a powerful, unified communication hub inside every vehicle.

Whether transmitting mission-critical voice or streaming live video from the field, Tait Connected Vehicle solutions deliver the reliability and flexibility you rely on in emergency situations, keeping you safe and on-mission.



TAIT R5: EDGE COMPUTING CONNECTIVITY PLATFORM

BROADBAND COMMAND & CONTROL

VOICE

Integrate with PTT, standard voice or P25 and DMR radio networks and Tait mobile terminals.

WIRELESS

LTE, Wi-Fi, Bluetooth, Location & Navigation and Video.

WIRED

Connections include two ethernet ports, two USB ports, eight GPIO, RS232 and CAN bus.

VEHICLE CONTROLS

OneView applications for Matrix Signage, Alerting Systems (Sirens), Lights, Public Address Loudspeakers, customizable based on driver and vehicle.

FLEET MANAGEMENT

Integrates with telematics systems to give fleet managers 24/7 operational intelligence, driver and vehicle behavior insights; improving fleet safety and efficiency.



TAIT AND HYPHA CONVERGED MOBILITY SOLUTIONS

TAIT CONNECTED VEHICLE FOR SATELLITE, BROADBAND AND LMR

CONNECTIVITY

Leverage the power of Starlink satellites, 4G/5G and LMR (Land Mobile Radio) to stay linked to crucial resources.

VISIBILITY

Integrate the tools, systems and channels you already use into a single multi-bearer hub with seamless switching.

MOBILITY

Take your connection with you and use it like any Wi-Fi network – sharing real-time data from your preferred smart devices.



HYPHAONE

Next-generation satellite technology with integrated Starlink Flat High Performance panel. Peplink & Tait devices are embedded inside.

 up to 200Mbps
  24 – 40 w
  110° field of view

Size: 330mm(L) x 350mm(W) x 120mm(H)
Weight 4.7kg



HYPHAONE MINI

Ultra-compact satellite technology with integrated Starlink Mini panel. Peplink & Tait devices are embedded inside.

 up to 300Mbps
  110 – 150 w
  140° field of view

Size: 330mm(L) x 350mm(W) x 120mm(H)
Weight 4.7kg



TAIT AXIOM

The TMX450 TAIT AXIOM Mobile together with the Tait PTTtoX Service enables connectivity over any bearer, including LMR, satellite and cellular Services.

The Tait TMX450 is embedded inside the HyphaONE or HyphaONE Mini. The Tait PTTtoX Service can be hosted in the cloud or on customer premises.





TAIT SERVICES

You work around the clock, so it is vital that your mission-critical communications systems are up and running at all times.

To ensure coverage, capacity, and availability are maintained, ongoing monitoring, maintenance and management of these critical communications systems must be a top priority. But this can be time-consuming and takes time away from other priority tasks.

Tait Services allow your team to focus on their primary mission, feeling competent and confident they can always rely on their critical communications system. We partner with our global network of dealers who provide local expertise, services and support for your operation, supplemented by experienced Tait engineers.

TAIT SERVICES: OUR PORTFOLIO

PROFESSIONAL SERVICES

APPLYING DESIGN AND ADVISORY EXPERTISE TO YOUR VISION

Our design and consulting services include:

- › Requirements analysis
- › Detailed system design
- › Coverage planning and design
- › Migration planning and change management
- › Capacity and functionality planning
- › Cybersecurity
 - › External threat assessment
 - › Threat monitoring subscription
 - › Vulnerability testing

IMPLEMENTATION SERVICES

DELIVERING A SEAMLESS FUTURE

Our implementation and optimization services include:

- › Project management
- › RF site engineering
- › Coverage surveys and verification
- › Interference mitigation
- › Network core migrations
- › Radio systems installation and commissioning
- › Legacy integrations
- › Customized product development

EXTENSIVE SUPPORT SERVICES

ENSURING YOU CAN COUNT ON YOUR MISSION-CRITICAL SOLUTION

Our support and monitoring services include:

- › 24/7 Network monitoring and help desk
- › Extended warranties and repairs
- › Support packages including Tait Assurance, Tait Advantage and Tait Manage
- › Lifecycle management
- › Software maintenance and configuration management
- › Remote diagnostics

TRAINING SERVICES

MAXIMIZING YOUR INVESTMENT AND EMPOWERING YOUR PEOPLE

Our training services include:

- › e-Learning
- › Instructor-led (onsite)
- › Customized courses
- › Train-the-trainer options

WE GO BEYOND FOR A SAFER WORLD.

**CONTACT YOUR LOCAL DEALER
FOR MORE INFORMATION
[TAITCOMMUNICATIONS.COM/CONTACT](https://www.taitcommunications.com/contact)**

Tait has taken every care in compiling this brochure, but we're always innovating and therefore changes to our models, designs, technical specifications, visuals and other information included in this brochure could occur. For the most up-to-date information and for a copy of our terms and conditions please visit our website.

The words "Tait", "Tait Axiom", and the "Tait" logo are trademarks of Tait International Limited.

Copyright © 2026 Tait International Limited

Tait_B_Rapid Deployables_V1 January 2026



Quality
Management
ISO 9001



Environment
Management
ISO 14001:2015



Occupational
Health & Safety
Management
ISO 45001:2018

 Tait Communications



taït
communications